



## A Dive Into Art from the Center of the Heart

Saturday, September 14, 2024 – Monday, national holiday, January 13, 2025

### Welcome to a blissful experience of art!

The industrialist Rokuro Hara collected traditional Asian art during the early Meiji period. Over a century later, his great grandson Toshio Hara amassed over a thousand pieces of contemporary art. These works spanning centuries of art history now comprise two major collections showcased under one roof at Hara Museum ARC. Here, the works with their unique characteristics and historical backgrounds dialog and vie with one another to provoke new discoveries and fresh insights for both first time and repeat visitors.



[1] Jean-Michel Othoniel, *Kokoro*, 2009

### Exhibition Overview

---

The present exhibition is the second part of a year-long exploration of the ideas that surround the word “center.” The first part, under the title *A Shout Out for Art from the Center of Japan*, placed the spotlight on Hara Museum ARC’s role as a transmitter of art to the world with a perspective informed by its place at the geographical center of Japan. This second part places the focus on the actual experience of the viewer itself. As implied by the title, *A Dive Into Art from the Center of the Heart*, this exhibition invites visitors to not only look with their eyes, but to dive into art with all of their senses in order to discover pathways that connect to their hearts.

Contemporary art is often thought to be something that cannot be enjoyed without specialized knowledge. But most art still depends on the physical senses for their intended effect. In this exhibition, those senses are represented by the word “taste.” In the metaphorical sense, we “taste” the world (not only food!) with our senses and make judgments based on our feelings. The expression “personal taste” suggests art is a highly personal experience based on cues that we must process with our bodies and our minds. This exhibition invites you to leave your preconceptions behind and to trust your senses. In the world of contemporary art, all interpretations are valid and no interpretation is wrong.

How did a work make you feel? Was it uplifting, interesting, fun or beautiful? Or was it difficult, sad or frightening? There are myriad ways to feel about art, all of which depend greatly on the conditions surrounding the encounter. Does knowing about the artist, the technique or the historical context add to or detract from the experience? This exhibition suggests that all feelings have their justifications, but also that letting go of preconceptions might open your mind to something new and unexpected.

We hope during your visit that you will experience a wide range of feelings: confusion, arousal, curiosity or perhaps the urge to take a photo of something that captivates and touches your heart.



[2] Roy Lichtenstein, *Still Life with Scalloped Bowl*, 1972 oil on canvas, 105 × 120 cm © Estate of Roy Lichtenstein, New York & JASPAR, Tokyo, 2024 G3526



\*About Hara Rokuro (illustrated guide by Manpukuya Mogumogu).



\*Press release for A Shout Out for Art from the Center of Japan.

## Theme and Featured Works by Gallery (slated)

### ■ Gallery A: From a Distance

Max Stricher, Kae Masuda, Izumi Kato, Tadanori Yokoo, Toeko Tatsuno, Katsuro Yoshida, Kumi Sugai, others.

### ■ Gallery B: With Fresh Eyes

Richard Serra, Tomoko Yoneda, Jasper Johns, Kohei Nawa, Lai Chi Man, others.

### ■ Gallery C: Diving into the Senses

Andy Warhol, David Hockney, Miran Fukuda, Yayoi Kusama, Roy Lichtenstein, others.

### ■ Kankai Pavilion: Immersion

Jasper Johns, Tabaimo, Kano Tanyu, Maruyama Okyo, others.

### ■ Permanent Installations

Yayoi Kusama, *Mirror Room (Pumpkin)*  
Yoshitomo Nara, *My Drawing Room*  
Tatsuo Miyajima, *Time Link*  
Tabaimo, *Midnight Sea*  
Yasuhiro Suzuki, *Bench of the Japanese Archipelago*  
Yasumasa Morimura, *Rondo (Twins)*  
Andy Warhol, *Campbell's Tomato Soup*  
Olafur Eliasson, *Sunspace for Shibukawa*  
Jean-Michel Othoniel, *Kokoro*



[3] Tabaimo, *Shinju Trail*, 2018 single-channel video, hanging scroll 131.5 × 148.7 cm ©Tabaimo / Courtesy of Gallery Koyanagi

## Related Events (slated)

### ■ Guided Tour for Press

Time and date: 11:00 on Tuesday, September 17th  
Duration: approx.60 min.

### ■ Guided Tour of Outdoor Works

Time and dates: 11:00 on Sunday, September 22,  
Saturday, October 5  
Duration: approx.60 min.  
Participation fee: 500 yen  
Capacity: 10

### ■ Meet the Artist: Tabaimo

Time and date: 16:00-17:30 on Sunday, October 13  
Location: Café d'Art  
Capacity: 80 (slated)

### ■ Open-View Storage Guided Tour

Time and date: 11:00 on Sunday, November 3  
Duration: approx. 40 min.  
Participation fee: 1000 yen  
Capacity: 5

\*This normally members-only event is open to the general public as well.

### ■ Guided Tour by the Curator in Charge

Time and date: 13:30 on Saturday, November 3  
Duration: approx. 60 min.  
Participation fee: 500 yen  
Capacity: 10

## ■ Interactive Art Appreciation Session

### (Cooperation: Interactive Art Viewing Lab)

Time and date: 11:00 on Saturday, November 9

Duration: approx. 60 min.

Participation fee: free

Capacity: 10

## ■ Free Admission for Educators

Teachers at any educational facility will be admitted free of charge from December 23 (Mon.) to December 29 (Sun.). \*Persons wishing information about the current exhibition and museum facilities are requested to contact the museum in advance.

\*In Japanese only.

\*Please check our website for details.

## Information

---

**Title:** *A Dive Into Art from the Center of the Heart*

**Dates:** Saturday, September 14, 2024 – Monday, national holiday, January 13, 2025 \*Exhibited items in the Kankai Pavilion are subject to change during the exhibition period

**Venue/Organized by:** Hara Museum ARC

2855-1 Kanai, Shibukawa City, Gunma Prefecture 377-0027

Tel: 0279-24-6585 Email: [arc@haramuseum.or.jp](mailto:arc@haramuseum.or.jp) Official Website: <https://www.haramuseum.or.jp>

X: @haramuseum\_arc Instagram: haramuseumarc

**Hours:** 9:30 am - 4:30 pm (Admission until 4:00 pm)

**Closed:** Thursdays (open on January 2), January 1 \*Closed in winter from January 14, 2025 to mid-March

**Admission:** General 1,800 yen, 70 and over 1,500 yen, University and high school students 1,000 yen, Elementary and junior high school students 800 yen

\*Advance online tickets (date-specific) [https://e-tix.jp/haramuseum\\_arc/](https://e-tix.jp/haramuseum_arc/)

\*Free for Hara Museum ARC members, free for elementary and junior high school students in Gunma prefecture on Saturdays when school is in session.

## Images for Publication

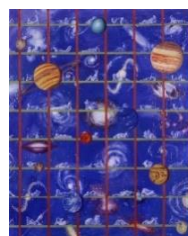
---



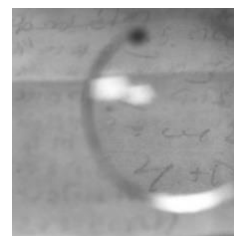
[4]



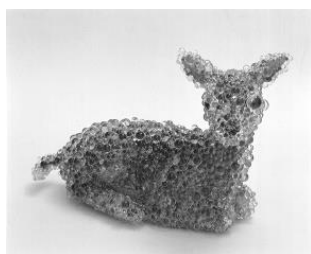
[5]



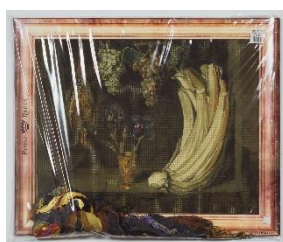
[6]



[7]



[8]



[9]



[10]



[11]

[12]

[4] Kae Masuda, *Faraway Songs – Voices Nearby*, 2012 oil on canvas 194 x 259 cm ©Kae Masuda

[5] Izumi Kato, *Untitled*, 2006 oil on canvas 227 x 181.8 cm ©Izumi Kato

[6] Tadanori Yokoo, *Who Shall Forget about Homeland?*, 2001 acrylic on canvas 227.5 x 182 cm ©Tadanori Yokoo

[7] Tomoko Yoneda, *Gandhi's Glasses – Viewing a note on his 'day of silence' shortly before his death*, 2003 gelatin silver print 120 x 120 cm ©Tomoko Yoneda, courtesy of ShugoArts

[8] Kohei Nawa, *PixCell-Bambi#2*, 2006 mixed media 31.5 x 51.0 x 20.0 cm

[9] Miran Fukuda, *Still Life with Cardoon and Francolin*, 1992 acrylic on canvas, string, paper, vinyl sheet 90 x 110 cm ©Miran Fukuda

[10] Hiroharu Mori, *After a painting*, 2004 video (loop) ©Hiroharu Mori

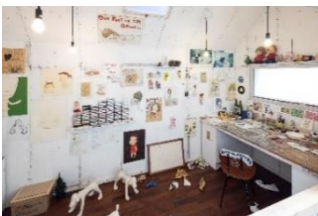
[11] Kano Tan'yu, *Dragon and tiger*, Edo period pair of hanging scrolls

[12] *Tiered boxes decorated with vine scrolls and squirrels in maki-e*, Edo-Meiji period

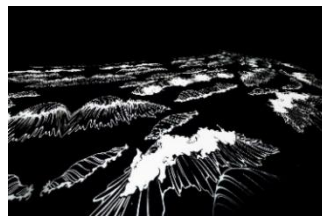
[13] attributed to Oguri Sotan, *Scene with two monkeys and a full moon*, Muromachi period hanging scroll

[13]

## Permanent and Semi-permanent Installations



[14]



[15]



[16]



[17]

[14] Yoshitomo Nara, *My Drawing Room*, 2004/2021 312.0 x 200.5 x 448.0 cm ©Yoshitomo Nara

[15] Tabaimo, *Midnight Sea*, 2006 video installation ©Tabaimo photo: Shinya Kigure

[16] Olafur Eliasson, *Sunspace for Shibukawa*, 2009 stainless steel, glass prisms ©2009 Olafur Eliasson

[17] Yasuhiro Suzuki, *Bench of the Japanese Archipelago*, 2014/2021 mixed media ©Yasuhiro Suzuki photo: Shinya Kigure

\*Regarding Plate 2, *Still Life with Scalloped Bowl* by Roy Lichtenstein, permission to print is required not only from Hara Museum ARC, but also from the respective copyright-holder. Please contact us for details.



## ■ About Hara Museum ARC



Hara Museum ARC photo by Shinya Kigure



Kankai Pavilion photo by Shinya Kigure



Open-View Storage photo by Sadamu Saito



Café d'Art menu selection

**Hara Museum ARC** opened in Shibukawa, Gunma in 1988 as an annex to the Hara Museum of Contemporary Art in Shinagawa, Tokyo, which opened in 1979. When the Hara Museum closed in January 2021, Hara Museum ARC was re-launched as the sole venue integrating the functions and activities of both museums and offering viewers with the opportunity to experience art surrounded by verdant nature against a backdrop of expansive blue skies. The **Hara Museum Collection** includes a wide selection of contemporary art by Japanese and overseas artists dating from the 1950s onward. The collection began around the time the Hara Museum of Contemporary Art opened and was amassed by Toshio Hara, chairman of the Foundation Arc-en-Ciel under which the museum operates. It encompasses a diverse range of expression, from paintings and sculptures by masters who spearheaded the major art movements of the 20th century such as Abstract Expressionism and Pop Art, to works in the areas of photography and video by artists active in the art scene of the 21st century.

The museum also houses the **Hara Rokuro Collection**, a collection of early modern Japanese paintings, crafts, and Chinese art acquired by Rokuro Hara (1842-1933), the great-grandfather of Toshio Hara, who contributed to the industrialization of Japan during the Meiji Era. Notable holdings include a National Treasure-designated celadon vase representing the epitome of Chinese porcelain; an Important Cultural Property-designated masterpiece of the *bijin-ga* (beautiful women) genre showing a woman passing through a reed portiere, considered a precursor to the *ukiyo-e* paintings of beautiful women; the masterful *Landscape of Yodo River* by Maruyama Okyo; and partition paintings that originally adorned the Nikko-in Guest Hall at Mi'idera temple by Kano Eitoku and other artists of the Kano school.

The buildings that comprise Hara Museum ARC were designed by **Arata Isozaki**, winner of the 2019 Pritzker Prize, considered the Nobel Prize in the field of architecture. Gallery A, with its impressive pyramid-shaped roof that echoes the peaks of Mount Haruna, and Galleries B and C, which face the front garden like extended wings, comprise exquisite spaces in which contemporary artworks can shine. On the other hand, the **Kankai Pavilion**, whose design was inspired by the traditional *shoin-zukuri* (drawing room) style of the Nikko-in Guest Hall at Mi'idera (Onjoji) temple in Shiga prefecture, is a quiet Japanese-style space where the skill of master craftsmen is apparent in every feature of the interior.

Within the expansive grounds of the museum, visitors can enjoy a stroll while enjoying various outdoor art installations by Japanese and overseas artists such as Andy Warhol and Olafur Eliasson.

A part of the Hara Museum Collection is kept in the **Open-View Storage** and made available to curators, critics and other art professionals affiliated with educational and research institutions for viewing and research purposes. Tours of the facility are also held once a month for Hara Museum ARC members.

With its high ceiling and large windows, the **Café d'Art** provides a restful setting where visitors can enjoy a wide selection of sandwiches, pasta and other dishes made with fresh, local produce and ingredients, as well as drip coffee carefully prepared by hand. Visitors can partake of the cafe's signature Image Cake which features a varying motif inspired by the current exhibition.



Museum Shop

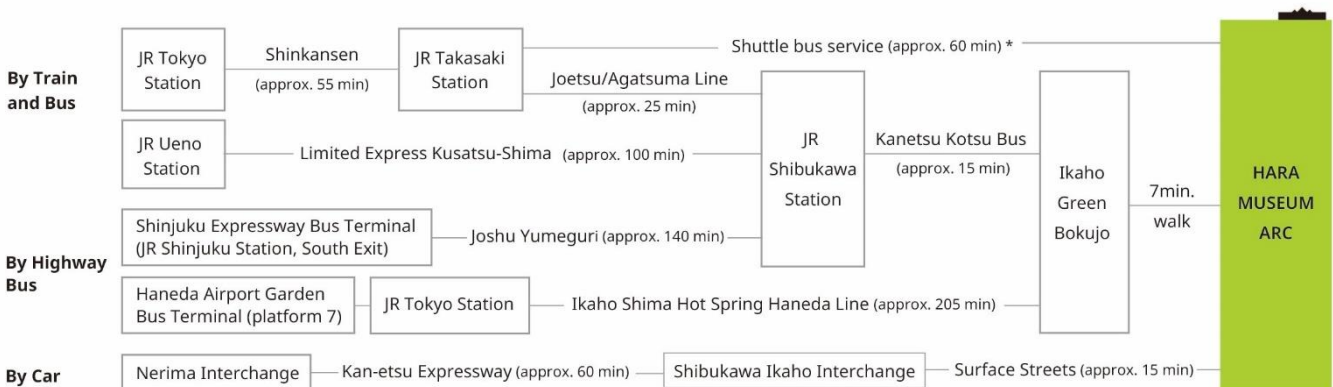


The **Museum Shop** offers a full selection of products that bring the enjoyment of contemporary art into daily life. These include original museum goods, exhibition catalogues and related publications and modern goods made with traditional Japanese craftsmanship, not to mention the periodic introduction of items created by Gunma-based artists.

The **Hara Museum ARC membership program** was set up for those who want to make the enjoyment of art a bigger part of their life. By presenting their membership card, members receive free admission, discounts at the Café d'Art and Museum Shop and invitations to members-only events such as tours of the Open-View Storage. The aim of the program is to allow members to experience art from a variety of perspectives while providing support for the museum's activities. For details, please go to our website. <https://www.haramuseum.or.jp/en/membership/>

## ■ Access Information

**Directions: By Train:** Take the Joetsu/Hokuriku Shinkansen to Takasaki, change to the Joetsu /Agatsuma Line, and disembark at Shibukawa. From Shibukawa, ARC is 10 minutes away by taxi or 15 minutes by bus (take the Ikaho Onsen bus at No. 3 bus stop to "Green Bokujo Mae" ).  
**By Car:** 8 kilometers (about 15 minutes) from the Kan-etsu Expressway Shibukawa Ikaho Interchange (in the direction of Ikaho Onsen).



\*Shuttle bus service runs every Sunday from the west exit of Takasaki Station (during April-October).

### □ Train and Bus

From the West Exit of JR Takasaki Station, take the shuttle bus to Hara Museum ARC (scheduled to run every Sunday from April to October). Takes about 1 hour. Or from JR Takasaki Station, take the Joetsu / Agatsuma Line and disembark at JR Shibukawa Station. From JR Shibukawa Station, ARC is 10 minutes away by taxi or 15 minutes by bus (take the Kanetsu Kotsu bus going to Ikaho Onsen or Ikaho Harunaguchi, get off at "Green Bokujo Mae" and walk about 7 minutes).

### □ Highway Bus

**JR Bus "Joshu Yumeguri"** <http://time.jrbuskanto.co.jp/bk03010.html> (In Japanese)

JR Shinjuku Station ⇔ JR Shibukawa Station/Ikaho/Kusatsu Onsen

**Kanetsu Kotsu Bus** <https://kan-etsu.net/en/>

**Ikaho Shima Onsen, Haneda Line (via JR Tokyo Station)** <https://kan-etsu.net/en/publics/index/137/>

Departs from Haneda Airport. Get off at "Green Bokujo Mae."

**Takasaki/Ikaho/Shima Onsen Hachioji Line** <https://kan-etsu.net/en/publics/index/164/>

Departs from JR Hachioji. At JR Shibukawa Station, change to the local bus and get off at "Green Bokujo Mae."

**Kusatsu-Kichijoji Line (via JR Shibukawa Station)** <https://www.kanto-bus.co.jp/nightway/kusatsu.php>

Departs from JR Kichijoji Station. At JR Shibukawa Station, change to the local bus and get off at "Green Bokujo Mae."

☐ **Car**

8 kilometers (about 15 minutes) from the Shibukawa Ikaho Interchange on the Kan-etsu Expressway. Free parking is available.

☐ **Chartered Helicopter**

Approx. 35 min. from Tokyo Heliport to Ikaho Onsen Nagamine Heliport and approx. 10 min. by taxi from Ikaho Onsen Nagamine Heliport to Hara Museum ARC.

\*Please contact the respective helicopter charter company for details.

**=Selected Japan Rail (JR) Train Schedules=**

\*Current as of April 2024. Please check the relevant time tables for the most recent information.

**Joetsu and Hokuriku Shinkansen (weekdays, weekends and Holidays)**

**Hakutaka No. 553**

Depart JR Tokyo Station at 7:52 → Arrive at JR Takasaki Station at 8:42 → Depart on the Agatsuma Line bound for Omae at 8:53 → Arrive at JR Shibukawa Station at 9:19 → Take the Kanetsu Kotsu bus bound for Ikaho Harunaguchi at 9:25 → Arrive at Green Bokujo at 9:40.

**Toki No. 317**

Depart JR Tokyo Station at 10:41 → Arrive at JR Takasaki Station at 11:32 → Depart on the Agatsuma Line bound for Naganohara Kusatsuguchi at 11:44 → Arrive at JR Shibukawa Station at 12:08 → Take the Kanetsu Kotsu bus for Ikaho Onsen at 12:14 → Arrive at Ikaho Green Bokujo at 12:29.

**Limited Express “Kusatsu/Shima”**

**Kusatsu/Shima 31 (weekends and holidays only)**

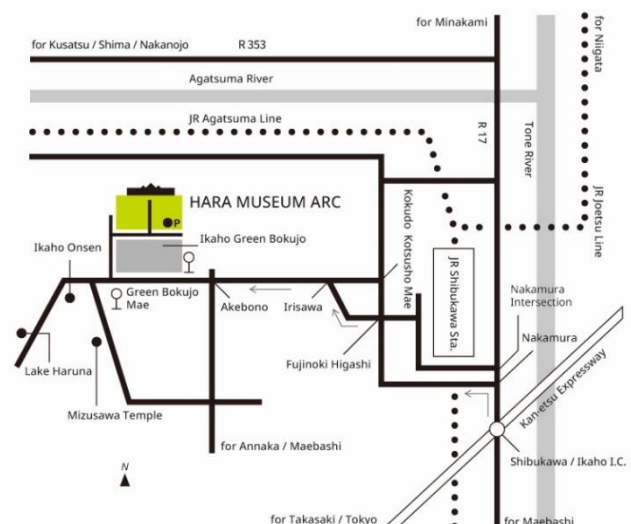
Depart from JR Ueno Station at 9:00 → Arrive at JR Shibukawa Station at 10:38 → Take the Kanetsu Kotsu bus bound for Ikaho Onsen at 10:55 → Arrive at Green Bokujo at 11:10.

**Kusatsu/Shima No. 1**

Depart from JR Ueno Station at 10:00 → Arrive at JR Shibukawa Station at 11:36 → Take the Kanetsu Kotsu bus bound for Ikaho Harunaguchi at 11:42 → Arrive at Green Bokujo at 11:53.

**Kusatsu/Shima No. 3**

Depart from JR Ueno Station at 12:10 → Arrive at JR Shibukawa Station at 13:50 → Take the Kanetsu Kotsu bus bound for Ikaho Harunaguchi at 13:55 → Arrive at Green Bokujo at 14:06.



**■ Press Enquiries**

Email: [press@haramuseum.or.jp](mailto:press@haramuseum.or.jp)