



Portraits: Selections from the Hara Museum Collection

March 14 (Saturday) – July 5 (Sunday), 2020
Galleries A, B and C (Contemporary Art)

This spring, Hara Museum ARC is happy to present *Portraits: Selections from the Hara Museum Collection*, a show which will feature portraits by a variety of artists, including all 24 works in the *Rembrandt* series by Yasumasa Morimura.



1



2



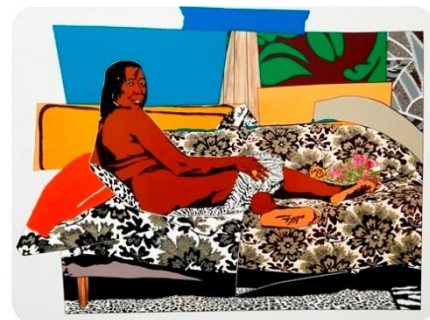
3



4



5



6



7

- 1 Yasumasa Morimura, *Self-Portrait as the Prodigal Son 1636*, 1994 ©Yasumasa Morimura
- 2 Yasumasa Morimura, *Majestic Self-portrait 1640*, 1994 ©Yasumasa Morimura
- 3 Yasumasa Morimura, *Face Study III*, 1994 ©Yasumasa Morimura
- 4 Yasumasa Morimura, *Face Study I*, 1994 ©Yasumasa Morimura
- 5 Yasumasa Morimura, *Portrait of the Family – Wife* ©Yasumasa Morimura
- 6 Yoshitomo Nara, *Eve of Destruction*, 2006 ©Yoshitomo Nara
- 7 Mickalene Thomas, *Mama Bush: One of a Kind Two*, 2009 ©Mickalene Thomas

■Featured Artists

Ai Weiwei, Izumi Kato, Christian Boltanski, Kazz Sasaguchi, James Rosenquist, Jean Dubuffet, Jonathan Borofsky, Cindy Sherman, Tracy Emin, Yoshitomo Nara, Mickalene Thomas, Yasumasa Morimura, Miwa Yanagi, Robert Rauschenberg and others.

■Semi-permanent Exhibits

Large-scale installations by Yayoi Kusama and Tabaimo

■Cherry Blossoms at Hara Museum ARC



Visitors to Hara Museum ARC during the Golden Week holidays (mid-April to the beginning of May) can expect to enjoy the beautiful blossoms of a variety of cherry trees that grow on its expansive grounds 500 meters above sea level at the foot of the Haruna Mountain Range. A great many people are drawn to the museum at this time to enjoy the beautiful contrast presented by the light pink petals against the dark tones of the museum's buildings designed by Arata Isozaki. We hope you can come and treat yourself to this spectacle of

cherry blossoms, along with the many large-scale art installations scattered over the wide expanse of the museum grounds.

■Information

Venue: Gallery A, B and C at Hara Museum ARC

2855-1 Kanai, Shibukawa-shi, Gunma 377-0027 Tel 0279-24-6585 Fax 0279-24-0449 E-mail arc@haramuseum.or.jp <https://www.haramuseum.or.jp> (official website)

<https://twitter.com/HaraMuseumARC> (Twitter)

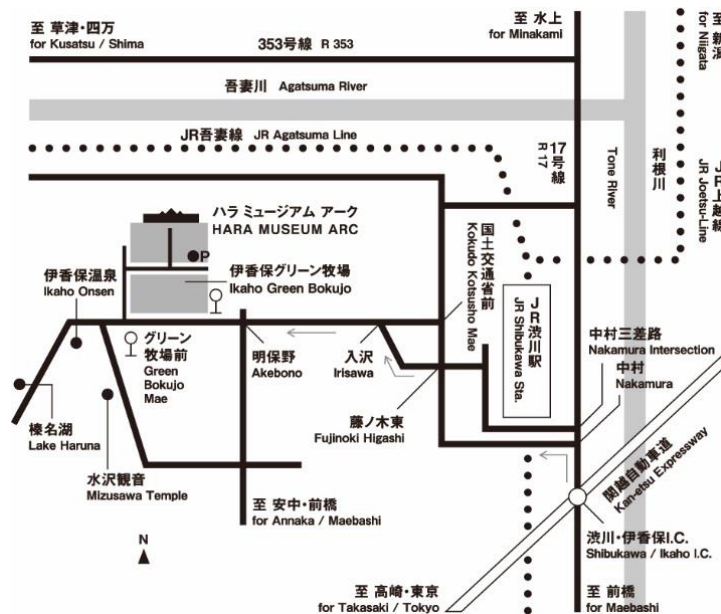
Hours: 9:30 am - 4:30 pm (last entry at 4:00 pm)

Closed: Thursdays (except April 30) *Subject to temporary closure in the event of severe weather.

Admission: General 1,100 yen, Students 700 yen (high school and university) or 500 yen (elementary and junior high), Free for Hara Museum members, 10% discount for a group of 20 or more, Combination ticket for Hara Museum ARC and Ikaho Green Bokujo (except during Golden Week): General 1,800 yen; Students 1,500 yen (high school and university) or 1,400 yen (junior high), 800 yen (elementary), half price for those over 70, discount for groups of 20 or more.

*Visitors to the Kankai Pavilion can view the on-going exhibition in the contemporary art galleries as well.

Directions: By train: Take the Joetsu Shinkansen to Takasaki, change to the Joetsu Line, and disembark at Shibukawa. From Shibukawa, ARC is 10 minutes away by taxi or 15 minutes by bus (take the Ikaho Onsen bus to "Green Bokujo Mae"). By car: 8 kilometers (about 15 minutes) from the Kan-etsu Expressway Shibukawa Ikaho Interchange (in the direction of Ikaho Onsen).



Press Enquiries: T. 81.279.24.6585 E. press@haramuseum.or.jp