

Hara Museum of Contemporary Art

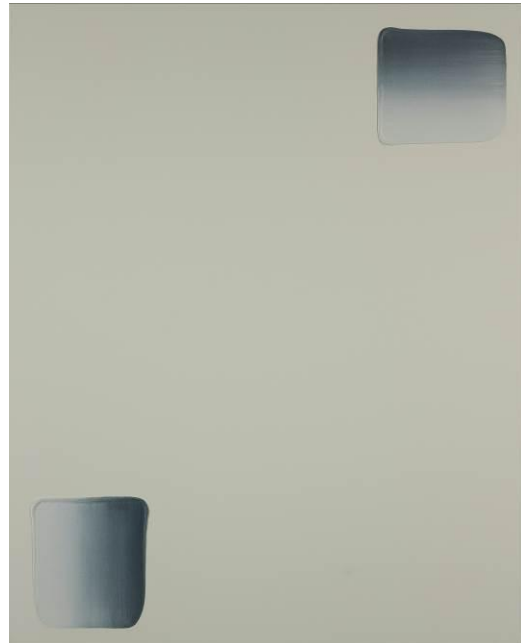
Press Release 2014/12/11

The Hara Museum Collection at 35

October 25 (Saturday), 2014 – January 12 (Monday, national holiday), 2015



[1]



[2]

This December marks the 35th anniversary of the Hara Museum of Contemporary Art and the Hara Museum Collection. To fill the vacuum in Japan for a museum specializing in contemporary art, the Foundation Arc-en-Ciel was started in 1977. The foundation began acquiring outstanding works from Japan and abroad. Since the Hara Museum of Contemporary Art opened in 1979, the collection has grown to more than 1,000 works. In this exhibition, we showcase artworks by artists active in Japan that have graced the walls of the museum from its beginning to the present day.

One highlight of the show is a group of works by Mono-ha artists centered on Lee Ufan (Korean, b 1936), as well as other artists of the same era. In the late '60s, young artists making use of natural everyday materials such as wood, stone, metal and paper appeared under the Mono-ha banner with Lee providing the philosophical underpinnings. This group has in recent years enjoyed renewed acclaim on the international stage. Lee arrived in Japan in 1956, making it his home base as he pursued activities that spanned the world. Known for sculptural pieces comprised of stone and metal sheets and paintings created with a few brush marks and much empty space, his works inspire deep contemplation through the minimal manipulation of materials. Two years ago, the Hara Museum acquired Lee's work entitled *Dialogue*. The museum had previously acquired the early works *From Line No.790323* (1979) and *From Point No.79032* (1979), the large-scale *With Winds* (1990), and the sculptural piece *Relatum* (1991). With the addition of a masterwork from the 2000s, the collection now spans the entire arc of his career. Five representative works by Lee will be on display, as well as artworks by Koji Enokura, Kishio Suga and Katsuro Yoshida, and a permanent installation by Nobuo Sekine.* Note 1

Works acquired from solo exhibitions held at the museum constitute the core of the collection. Of these, pieces by Nobuyoshi Araki, Masako Ando, Izumi Kato, Kazumi Kurigami, Hiroe Saeki, Eiichiro Sakata, Rika Noguchi, Tomoko Yoneda, and Miwa Yanagi are showcased. Also on view are the various sculptures and other permanent installations by Yoshihiro Suda, Yoshitomo Nara, Tatsuo Miyajima and Yasumasa Morimura and others, that dot the outside grounds or utilize the indoor spaces of a museum that was once a private residence - works which may be considered the face of the Hara Museum. The result is an exhibition that traces the 35-year history of the Hara Museum and contemporary art in this period.

During this same period, the Hara Museum ARC annex in Gunma will hold a parallel exhibition, *The Hara Museum Collection - 35 Years of International Exchange*, focusing on selections from the Hara Museum Collection that reflect the exchange it has held with many countries over the years. These include Europe, the Americas, Oceania, Asia, and Africa. Visitors can also enjoy Yayoi Kusama's *Mirror Room (Pumpkin)* (1991), Tabaimo's *midnight sea* (2006/2008) and Olafur Eliasson's *Sunspace for Shibukawa* (2009) which are on view throughout the year. *Note 2

Note 1: The three parts that comprise *With Winds* (1990) can be viewed inside the open-stack storage at Hara Museum ARC as part of a guided tour given by a museum curator from 2:30 every Sunday during the exhibition period. Reservations are required.

Note 2: *The Hara Museum Collection – 35 Years International Exchange* at Hara Museum ARC will be on from October 11 (Saturday), 2014 to January 4 (Sunday), 2015.

[Exhibition Information]

Exhibition title: *The Hara Museum Collection at 35*

Dates: October 25 (Saturday), 2014 – January 12 (Monday, national holiday), 2015

Place: Hara Museum of Contemporary Art, 4-7-25 Kitashinagawa, Shinagawa-ku, Tokyo 140-0001

Tel: 03-3445-0651 Website: <http://www.haramuseum.or.jp> Mobile site: <http://mobile.haramuseum.or.jp>

Blog: <http://www.art-it.asia/u/HaraMuseum> Twitter: <http://twitter.com/haramuseum> (in Japanese only / account name: @haramuseum)

Participating artists: Nobuyoshi Araki, Masako Ando, Koji Enokura, Izumi Kato, On Kawara, Yayoi Kusama, Tetsumi Kudo, Kazumi Kurigami, Hiroe Saeki, Eiichiro Sakata, Kishio Suga, Hiroshi Sugimoto, Nam June Paik, Kohei Nawa, Rika Noguchi, Aiko Miyawaki, Katsuro Yoshida, Tadanori Yokoo, Tomoko Yoneda, Miwa Yanagi, Lee Ufan and others

Number of works: About 45 (not including permanent installations)

Organized by: Hara Museum of Contemporary Art

Hours: 11:00 am - 5:00 pm, Wednesday until 8:00 pm (last entry 30 minutes before closing)

Closed: Mondays (except November 3, 24 and January 12), November 4, 25 and the year-end/new year holidays (12/29 – 1/5)

Admission: General 1,100 yen; Students 700 yen (high school and university) or 500 yen (elementary and junior high); Free for Hara Museum members, students through high school every Saturday during the school term; 100 yen discount per person for groups of 20 or more

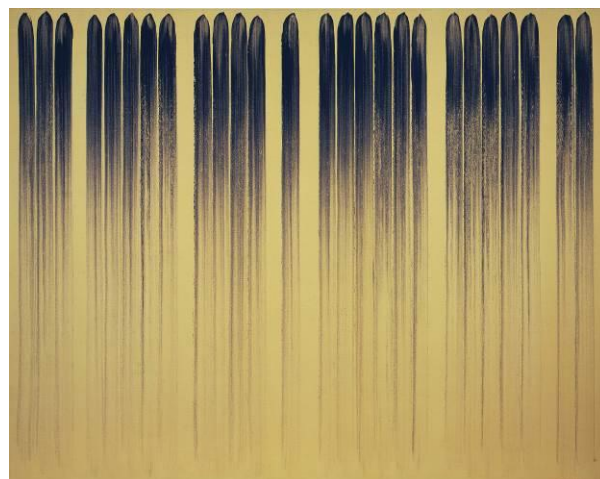
Directions: 5 minutes by taxi or 15 minutes on foot from JR Shinagawa Station (Takanawa exit); or from the same station take the No.96 bus, get off at the first stop (Gotenyama), and walk 3 minutes

Guided tours: A guided tour will be given by the curator in charge of the exhibition every Sunday and on national holidays from 2:30 pm (the tour lasts approximately 30 minutes).

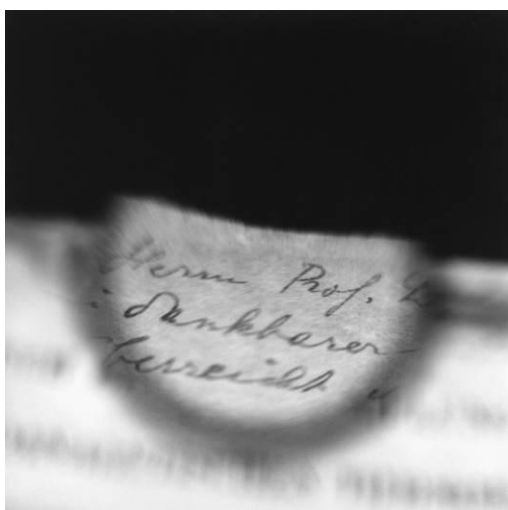
[Images for Publication]



[3]



[4]



[5]



[6]

[1][2] Lee Ufan, *Dialogue*, 2012 mineral pigments on canvas 227 x 182 cm ©Lee Ufan

[3] Yayoi Kusama, *Self Obliteration*, 1980 mixed media size variable ©Yayoi Kusama

[4] Lee Ufan, *From Line No.790323*, 1979 oil on canvas 181 x 227 cm ©Lee Ufan

[5] Tomoko Yoneda, *Freud's Glasses - Viewing a text by Jung I*, 1998 gelatin silver print 120 x 120 cm

©Tomoko Yoneda

[6] Kohei Nawa, *PixCell-Bambi #2*, 2006 mixed media 31.5 x 51 x 20 cm ©Kohei Nawa

For publicity materials, please contact the Hara Museum of Contemporary Art (Watanabe, Kajita) by telephone or e-mail.
Tel: +81-3-3280-0679 Fax: +81-3-5791-7630 E-mail: press@haramuseum.or.jp
4-7-25 Kitashinagawa, Shinagawa-ku, Tokyo 140-0001