



HARA MUSEUM ARC

Press Release 2014/10/17

The Hara Museum Collection – 35 Years of International Exchange **October 11 (Saturday), 2014 – January 4 (Sunday), 2015** **Galleries A, B and C (Contemporary Art)**

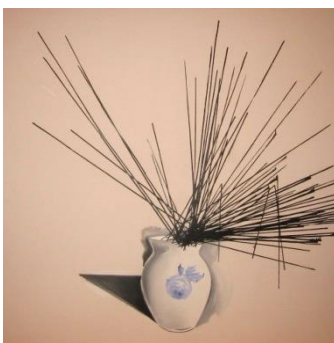
This December, the Hara Museum of Contemporary Art (Shinagawa-ku, Tokyo), the parent institution of Hara Museum ARC, celebrates its 35th anniversary of its founding in 1979. To mark the occasion, Hara Museum ARC is proud to showcase works from the Hara Museum Collection that traces the museum's 35-year history of international exchange. This exhibition and a parallel show at the Hara Museum in Tokyo represent complementary efforts to trace the museum's trajectory throughout the course of its history and to ponder its future course.

The Hara Museum Collection comprises outstanding works by artists who have mounted exhibitions at either venue over the years or by artists deemed promising by the museum. This show casts a spotlight on works mainly produced in the years after 1988 when Hara Museum ARC first opened by leading artists at the forefront of the art scene in Europe, the Americas, Asia, Oceania and Africa.

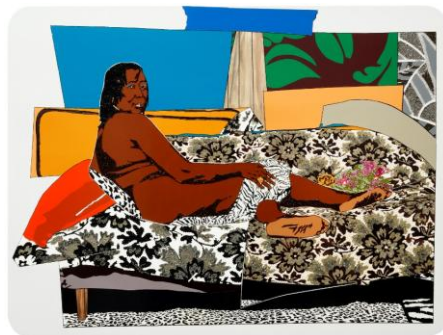
The parallel show at the Hara Museum of Contemporary Art, entitled *The Hara Museum Collection at 35* (October 25, 2014 - January 12, 2015), showcases artists who have been active in Japan, including Lee Ufan and other members of the Mono-ha school, as well as other artists of the same era.



Jean-Michel Othoniel, *Kokoro*, 2009



Wilhelm Sasnal, *Untitled*, 2007



Mickalene Thomas,
Mama Bush: One of a Kind Two, 2009



Adriana Varejao, *Swimming Pool*, 2005

[Exhibition Details]

Title: *The Hara Museum Collection – 35 Years of International Exchange*

Dates: October 11 (Saturday), 2014 – January 4 (Sunday), 2015

Venue: Hara Museum ARC 855-1, Kanai, Shibukawa-shi, Gunma 377-0027

Tel 0279-24-6585 Fax 0279-24-0449 E-mail arc@haramuseum.or.jp

<http://www.haramuseum.or.jp> (official website) <http://mobile.haramuseum.or.jp> (mobile site)

<http://www.art-it.asia/u/HaraMuseum> (blog) <http://twitter.com/HaraMuseumARC> (Twitter)

Featured Artists: Tracey Emin / Jan Fabre / Anselm Kiefer / Sigmar Polke / Pipilotti Rist / Wilhelm Sasnal / Bruce Nauman / Mickalene Thomas / Adriana Varejao / Tomie Ohtake / Ernesto Neto / Tracey Moffat / William Kentridge / Zhang Huan / Surasi Kusolwong / Yayoi Kusama / Tabaimo and others

Hours: 9:30 am - 4:30 pm (last entry at 4:00 pm)

Closed: Thursdays and January 1 *Subject to temporary closure in the event of severe weather.

Admission: General 1,100 yen, Students 700 yen (high school and university) or 500 yen (elementary and junior high), Free for Hara Museum members, 10% discount for a group of 20 or more, Combination ticket for Hara Museum ARC and Ikaho Green Bokujo (except during Golden Week): General 1,800 yen; Students 1,500 yen (high school and university) or 1,400 yen (junior high), 800 yen (elementary), half price for those over 70, discount for groups of 20 or more *Children must be accompanied by an adult.

*For residents of Gunma Prefecture: Free admission for elementary and junior high school children every Saturday during the school term/200-yen-discount on admission for up to five persons upon presentation of the Guchoki Passport/Free admission to students (through high school) on Gunma Prefecture Day (October 28).

Directions: By train: Take the Joetsu Shinkansen to Takasaki, change to the Joetsu Line, and disembark at Shibukawa. From Shibukawa, ARC is 10 minutes away by taxi or 15 minutes by bus (take the Ikaho Onsen bus to "Green Bokujo Mae"). By car: 8 kilometers (about 15 minutes) from the Kan-etsu Expressway Shibukawa Ikaho Interchange (in the direction of Ikaho Onsen).

For publicity materials, please contact: Hara Museum ARC, 2855-1, Kanai, Shibukawa-shi, Gunma 377-0027

Tel: 0279-24-6585 Fax: 0279-24-0449 E-mail: press@haramuseum.or.jp