

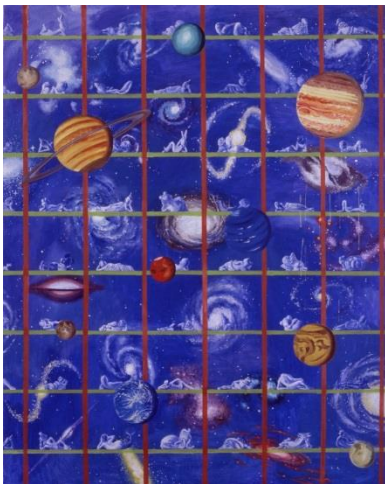


Y'S from the Hara Museum Collection

March 9 (Saturday) – June 30 (Sunday), 2019

Galleries A, B and C (Contemporary Art)

Since ancient times, artists have constantly sought out new avenues of exploration and challenges through which they developed their own unique styles of expression. In this exhibition, we invite you to explore large-scale artworks from the Hara Museum Collection by artists whose last name begins with the letter "Y" centering on Tadanori Yokoo (5 works) and Miwa Yanagi (8 works) who led the art scene in Japan during the Showa and Heisei eras.



[1] Tadanori Yokoo, *Who Shall Forget about Homeland?*, 2001

In the background of this painting is a nebula floating within a deep blue space reminiscent of the universe. A number of lying figures peer at it as if with a sense of nostalgia, and over it all is the viewer who watches with a bird's eye view. The figures lying on their sides with their heads resting on their hands look like reclining Buddhas in poses ranging from relaxed to seductive. For Yokoo they are part of a recurring theme of duality: life and death, sacred and profane, man and woman.

[1] ©Tadanori Yokoo

[2] Tadanori Yokoo, *Post War*, 1985

This work on ceramic was made for *Tokyo: Form And Spirit*, an exhibition organized by the Walker Art Center (Minneapolis) in 1986 which traveled to various venues in North America. It consists of seven ceramic plates on which Yokoo depicts motifs from Japanese history ranging from the Edo period to the near future. Superimposed over scenes of a Tokyo devastated by fire bombing at the end of the Pacific War are the faces of singers shining rays of hope into the hearts of Japanese (including Hibari Misora singing the song *Tokyo Kid*).

Yokoo used advanced techniques to silkscreen images onto large, smooth ceramic plates, a new approach adopted by the artist to represent the bright and dark sides of the era.

The display and frame for this work at the time of the *Tokyo: Form And Spirit* exhibition were conceived by Arata Isozaki, the architect responsible for the design of Hara Museum ARC. Both frame and display have been reproduced here under the supervision of Isozaki and Yokoo.



[2] Installation view at Hara Museum ARC, 2017
©Tadanori Yokoo Photo by Shinya Kigure

Tadanori Yokoo

Born in Nishiwaki, Hyogo prefecture in 1936, Yokoo worked as a graphic designer and won the Grand Prize in the Print Division of the Paris Youth Biennale Exhibition in 1969. He has held solo exhibitions at major museums in Japan and abroad, including Museum of Modern Art, New York (MoMA) (1972). Upon viewing a Picasso exhibition at the MoMA in 1980, he became intrigued with the artist's way of life and made his famous "painter declaration". His creative activities over the years have encompassed painting, design, photography, novels and essays, and his many awards include the Mainichi Art Award, the Medal with Purple Robbon and the Praemium Imperiale Award. His exhibition *DNF Anya Kouro* was held at the Hara Museum in 2001. In 2019, he was in charge of title and poster design for the NHK Taiga Drama (period drama) "Idaten".



[3] © Miwa Yanagi

[3] Miwa Yanagi, *My Grandmothers: AI*, 2003

In her *My Grandmothers* series of works, Yanagi recruited 20 women from the general public and asked them to imagine how they would be 50 years later. She then had the women to model their own vision of themselves while engaging them in conversation. Each portrait that was created was then accompanied by a description of the scene.

The work *AI* features an elderly woman reading the fortunes of children. As she reads their fortunes, she is saddened by mediocre futures in store for them, even as she awaits the appearance of a girl who would someday become her successor.

Miwa Yanagi

Born in Kobe City, Hyogo prefecture, Yanagi completed the graduate course at the Kyoto City University of Arts. Since her first solo exhibition in Kyoto in 1993, she has held solo exhibitions in Japan and abroad at such venues as the Deutsche Guggenheim Museum in Berlin (2004). Her solo show was featured in the Japan Pavilion at the 53rd Venice Biennale (2009). In her solo exhibition at the Hara Museum *The Incredible Tale of the Innocent Old Lady and the Heartless Young Girl* (2005), she introduced a series of works that took as its theme fairy tales featuring young girls and old women. More recently, she has been involved with a great number of theatrical productions. She is currently a professor at the Kyoto University of Art and Design.



[4]



[5]

[4] Takeo Yamaguchi, *Form*, 1952

[5] Tomoko Yoneda, *Hesse's Glasses - Viewing a photograph of a soldier*, 1998 ©Tomoko Yoneda

Featured Artists (approx. 30 works by 8 artists)

Miwa Yanagi, Yukinori Yanagi, Takeo Yamaguchi, Tadasu Yamamoto, Go Yanagi, Tadanori Yokoo, Katsuro Yoshida, Tomoko Yoneda

Long-term Exhibits

Yayoi Kusama, Tabaimo

Hara Museum ARC (Gunma)

Hara Museum ARC opened in 1988 in Shibukawa, Gunma prefecture as an annex to the Hara Museum of Contemporary Art in Tokyo (see box on the last page). Situated in the foothills of the Mt. Haruna, one of the so-called *Jomosanzan* or "Three Peaks of Jomo" (the old name of Gunma), the museum's large-scale wooden buildings with their sleek black exteriors (designed by Arata Isozaki) stand in stark contrast to rich greens of the surrounding highland scenery. In addition to exhibitions centered on the museum's permanent collection, Hara Museum ARC holds events, workshops and various art education programs. In 2008, an Open-view Storage and Kankai Pavilion were added as part of an expansion that has enabled Hara Museum ARC to serve as a capacious setting for art that transcends the boundaries of time and place.



Jean-Michel Othoniel, *Kokoro*, 2009
Photography: Yuichi Chiraku



Cherry Blossoms at Hara Museum ARC

Visitors to Hara Museum ARC during the Golden Week holidays (mid-April to the beginning of May) can expect to enjoy the beautiful blossoms of a variety of cherry trees that grow on its expansive grounds 500 meters above sea level at the foot of the Haruna Mountain Range. A great many people are drawn to the museum at this time to enjoy the beautiful contrast presented by the light pink petals against the dark tones of the museum's buildings designed by Arata Isozaki. We hope you can come

and treat yourself to this spectacle of cherry blossoms, along with the many large-scale art installations scattered over the wide expanse of the museum grounds.

Exhibition Details

Title: Y'S from the Hara Museum Collection

Dates: March 9 (Saturday) – June 30 (Sunday), 2019

Venue: Gallery A, B and C at Hara Museum ARC

2855-1 Kanai, Shibukawa-shi, Gunma 377-0027 Tel 0279-24-6585

Fax 0279-24-0449

E-mail arc@haramuseum.or.jp <https://www.haramuseum.or.jp> (official website) <https://twitter.com/HaraMuseumARC> (Twitter)

Hours: 9:30 am - 4:30 pm (last entry at 4:00 pm)

Closed: Thursdays (except March 21 and May 2) *Subject to temporary closure in the event of severe weather.

Admission: General 1,100 yen, Students 700 yen (high school and university) or 500 yen (elementary and junior high), Free for Hara Museum members, 10% discount for a group of 20 or more, Combination ticket for Hara Museum ARC and Ikaho Green Bokujo (except during Golden Week): General 1,800 yen; Students 1,500 yen (high school and university) or 1,400 yen (junior high), 800 yen (elementary), half price for those over 70, discount for groups of 20 or more

Directions: By train: Take the Joetsu Shinkansen to Takasaki, change to the Joetsu Line, and disembark at Shibukawa. From Shibukawa, ARC is 10 minutes away by taxi or 15 minutes by bus (take the Ikaho Onsen bus to "Green Bokujo Mae"). By car: 8 kilometers (about 15 minutes) from the Kan-etsu Expressway Shibukawa Ikaho Interchange (in the direction of Ikaho Onsen).

Related Event:

Meet the Artist: Tadanori Yokoo *The event will be given in by Japanese. Please check our website for details.

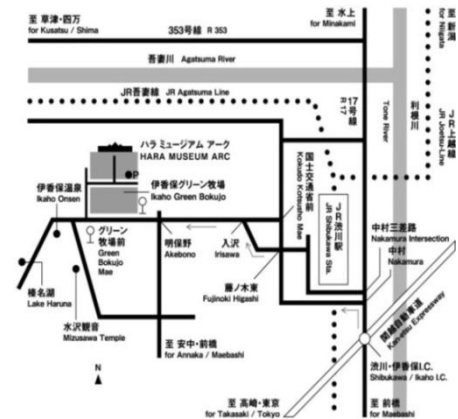
Upcoming Exhibition

Izumi Kato – *LIKE A ROLLING SNOWBALL*

Hara Museum ARC (Gunma): July 13, 2019 – January 13, 2020

Hara Museum (Tokyo): August 10, 2019 – January 13, 2020

Izumi Kato is known as a creator of powerful and mysterious sculptures with a primitivistic air. Initially a painter, Kato soon expanded his oeuvre to encompass wooden sculptures and dynamic installations that incorporate stone, cloth and a wide range of other materials. He is a frequent exhibitor at venues in Europe, the United States, and Asia, including the 2007 Venice Biennale. The exhibition at the Hara Museum, Kato's first solo show at the art museum in Tokyo, will include new paintings and sculptures, while Hara Museum ARC will present a retrospective of the artist's works that include never-before-shown items from the Kato's own collection. Together, these shows promise to provide a broad overview of Kato's artistic vision.



Izumi Kato, *Untitled*, 2006
©Izumi Kato



Press Enquiries: T. 81.279.24.6585 E. press@haramuseum.or.jp